

Introduction

The *Protection of the Environment Operations Act 1997* (POEO Act) requires that holders of an environment protection licence make their pollution monitoring data publicly available within 14 days of receipt. The NSW EPA Public Register can be found at: www.epa.nsw.gov.au/licensing-and-regulation/public-registers

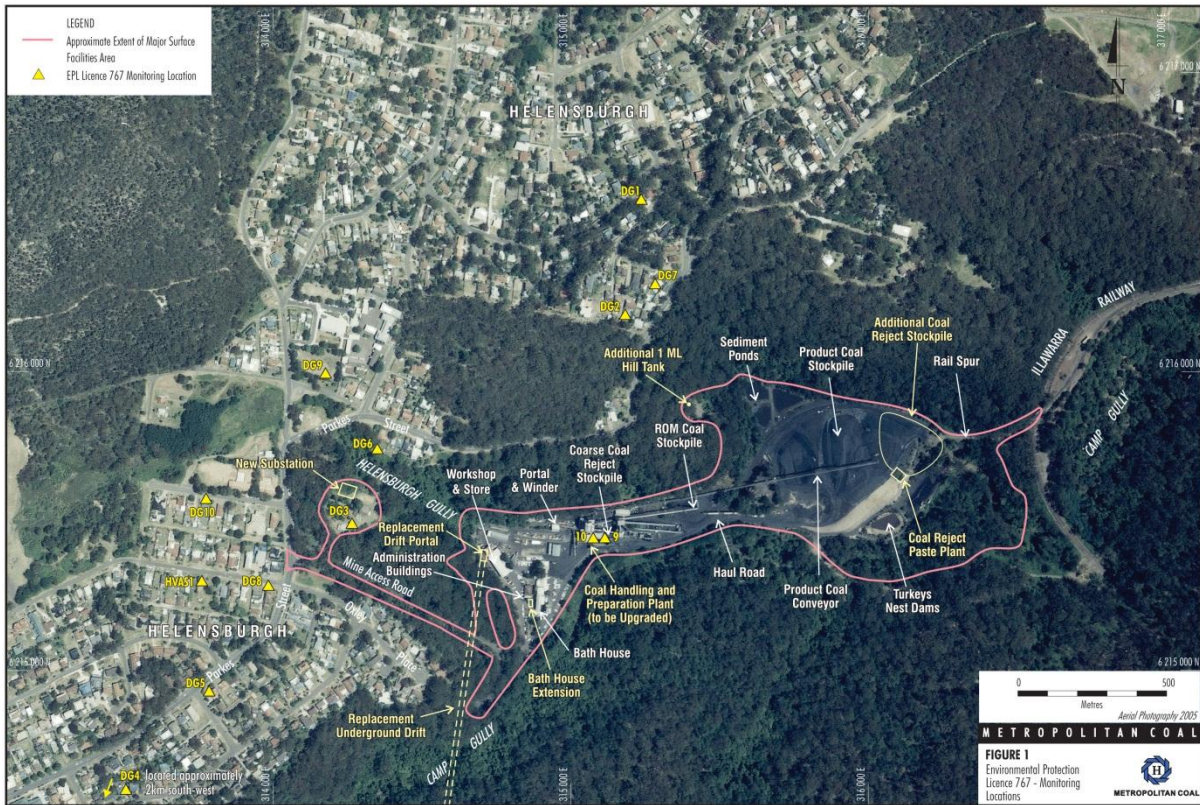
Metropolitan Coal is holder of Environmental Protection Licence 767 (EPL 767). This licence pertains to ‘Mining for Coal’ and ‘Coal Works’. EPL 767 identifies a number of monitoring points as shown in **Table 1 and Figure 1**. Metropolitan Coal is located Off Parkes Street Helensburgh, NSW, 2508.

Table 1 – EPL 767 Monitoring Points, Parameters and Frequency

Monitoring Point Number	Name	Parameter	Frequency
1	Dust Gauge at 136 The Crescent	Ash / Combustible Solids / Insoluble Solids	Monthly
2	Dust Gauge at 28 Old Station Road	Ash / Combustible Solids / Insoluble Solids	Monthly
3	Dust Gauge at The Mine Entrance	Ash / Combustible Solids / Insoluble Solids	Monthly
4	Dust Gauge at Helensburgh Golf Course	Ash / Combustible Solids / Insoluble Solids	Monthly
5	Dust Gauge at 95 Parkes Street	Ash / Combustible Solids / Insoluble Solids	Monthly
9*	Clean Water Tank at Water Treatment Plant	Oil and Grease / pH / TSS	Monthly
10	Flowmeter on from Water Treatment Plant to Camp Creek	Kilolitres Per Day	Daily (continuous)
11	Dust Gauge at 59 Parkes Street	Ash / Combustible Solids / Insoluble Solids	Monthly
12	Dust Gauge at 32 Old Station Road	Ash / Combustible Solids / Insoluble Solids	Monthly
13	Dust Gauge at 88 Parkes Street	Ash / Combustible Solids / Insoluble Solids	Monthly
14	Dust Gauge at Helensburgh Public School	Ash / Combustible Solids / Insoluble Solids	Monthly
15	Dust Gauge at Holy Cross Primary School	Ash / Combustible Solids / Insoluble Solids	Monthly
16	High Volume Air Sampler at 12 Robertson Street	Micrograms Per Cubic Metre	Every 6 days

**Note: The monitoring at Point 9 required by condition M2 is conducted by the licensee to determine compliance with the limits specified for Point 7 in condition L3.3*

Figure 1 – EPL 767 Monitoring Point Locations



This environmental monitoring summary is provided in accordance with the requirements of the POEA Act. It is distinct to the environmental monitoring summary which is provided in accordance with the requirements of Project Approval 08_0149 which was granted under Section 75J of the NSW Environmental Planning and Assessment Act, 1979 on 22 June 2009.

Monitoring Summary

Monitoring Point 1 – Dust Gauge at 136 The Crescent			
Month	Insoluble Solids (g/m ² /month)	Ash (g/m ² /month)	Combustible Solids (g/m ² /month)
Jan-26	0.6	0.3	0.3
Feb-26	0.8	0.3	0.5
Mar-26	0.9	0.2	0.7
Apr-26			
May-26			
Jun-26			
Jul-26			
Aug-26			
Sep-26			
Oct-26			
Nov-26			
Dec-26			

METROPOLITAN COAL – ENVIRONMENTAL PROTECTION LICENCE MONITORING SUMMARY

Monitoring Point 2 – Dust Gauge at 28 Old Station Road			
Month	Insoluble Solids (g/m²/month)	Ash (g/m²/month)	Combustible Solids (g/m²/month)
Jan-26	0.5	0.3	0.2
Feb-26	0.5	0.4	0.1
Mar-26	0.5	0.1	0.4
Apr-26			
May-26			
Jun-26			
Jul-26			
Aug-26			
Sep-26			
Oct-26			
Nov-26			
Dec-26			

Monitoring Point 3 – Dust Gauge at Mine Entrance			
Month	Insoluble Solids (g/m²/month)	Ash (g/m²/month)	Combustible Solids (g/m²/month)
Jan-26	0.3	0.1	0.2
Feb-26	0.2	0.1	0.1
Mar-26	1.1	0.2	0.9
Apr-26			
May-26			
Jun-26			
Jul-26			
Aug-26			
Sep-26			
Oct-26			
Nov-26			
Dec-26			

METROPOLITAN COAL – ENVIRONMENTAL PROTECTION LICENCE MONITORING SUMMARY

Monitoring Point 4 – Dust Gauge at Helensburgh Golf Course			
Month	Insoluble Solids (g/m²/month)	Ash (g/m²/month)	Combustible Solids (g/m²/month)
Jan-26	1.1	0.8	0.3
Feb-26	0.4	0.4	<0.1
Mar-26	0.7	0.4	0.3
Apr-26			
May-26			
Jun-26			
Jul-26			
Aug-26			
Sep-26			
Oct-26			
Nov-26			
Dec-26			

Monitoring Point 5 – Dust Gauge at 95 Parkes St			
Month	Insoluble Solids (g/m²/month)	Ash (g/m²/month)	Combustible Solids (g/m²/month)
Jan-26	1.0	0.3	0.7
Feb-26	0.9	0.5	0.4
Mar-26	1.5	0.4	1.1
Apr-26			
May-26			
Jun-26			
Jul-26			
Aug-26			
Sep-26			
Oct-26			
Nov-26			
Dec-26			

METROPOLITAN COAL – ENVIRONMENTAL PROTECTION LICENCE MONITORING SUMMARY

Monitoring Point 11 – Dust Gauge at 59 Parkes Street			
Month	Insoluble Solids (g/m²/month)	Ash (g/m²/month)	Combustible Solids (g/m²/month)
Jan-26	0.7	<0.1	0.7
Feb-26	0.6	0.3	0.3
Mar-26	0.4	0.1	0.3
Apr-26			
May-26			
Jun-26			
Jul-26			
Aug-26			
Sep-26			
Oct-26			
Nov-26			
Dec-26			

Monitoring Point 12 – Dust Gauge at 32 Old Station Road			
Month	Insoluble Solids (g/m²/month)	Ash (g/m²/month)	Combustible Solids (g/m²/month)
Jan-26	1.0	0.3	0.7
Feb-26	1.7	0.4	1.3
Mar-26	0.5	0.2	0.3
Apr-26			
May-26			
Jun-26			
Jul-26			
Aug-26			
Sep-26			
Oct-26			
Nov-26			
Dec-26			

METROPOLITAN COAL – ENVIRONMENTAL PROTECTION LICENCE MONITORING SUMMARY

Monitoring Point 13 – Dust Gauge at 88 Parkes Street			
Month	Insoluble Solids (g/m²/month)	Ash (g/m²/month)	Combustible Solids (g/m²/month)
Jan-26	0.6	0.5	0.1
Feb-26	1.0	0.6	0.4
Mar-26	0.8	0.6	0.2
Apr-26			
May-26			
Jun-26			
Jul-26			
Aug-26			
Sep-26			
Oct-26			
Nov-26			
Dec-26			

Monitoring Point 14 – Dust Gauge at Helensburgh Public School			
Month	Insoluble Solids (g/m²/month)	Ash (g/m²/month)	Combustible Solids (g/m²/month)
Jan-26	0.2	0.1	0.1
Feb-26	0.5	0.3	0.2
Mar-26	0.5	0.1	0.4
Apr-26			
May-26			
Jun-26			
Jul-26			
Aug-26			
Sep-26			
Oct-26			
Nov-26			
Dec-26			

Monitoring Point 15 – Dust Gauge at Holy Cross Primary School			
Month	Insoluble Solids (g/m²/month)	Ash (g/m²/month)	Combustible Solids (g/m²/month)
Jan-26	1.2	0.6	0.6
Feb-26	0.9	0.3	0.6
Mar-26	0.9	0.3	0.6
Apr-26			
May-26			
Jun-26			
Jul-26			
Aug-26			
Sep-26			
Oct-26			
Nov-26			
Dec-26			

METROPOLITAN COAL – ENVIRONMENTAL PROTECTION LICENCE MONITORING SUMMARY

Monitoring Point 16 – High Volume Air Sampler at 12 Robertson Street			
Date	PM10 ($\mu\text{g}/\text{m}^3$)	Date	PM10 ($\mu\text{g}/\text{m}^3$)
01/01/2026	11.1		
07/01/2026	11.9		
13/01/2026	11.6		
19/01/2026	9.4		
25/01/2026	18.7		
31/01/2026	37.9		
06/02/2026	21.9		
12/02/2026	18.7		
18/02/2026	18.5		
24/02/2026	13.5		
02/03/2026	12.3		
08/03/2026	11.1		
14/03/2026	13.8		
20/03/2026	5.1		
26/03/2026	9.8		

METROPOLITAN COAL – ENVIRONMENTAL PROTECTION LICENCE MONITORING SUMMARY

Point 9* – The Clean Water Tank of the Water Treatment Plant

	Jan	Feb	Mar	Apr	May	Jun	Jul	Aug	Sep	Oct	Nov	Dec	Limit / Units
Oil & Grease	<5	<5	<5	-	-	-	-	-	-	-	-	-	10 (mg/L)
pH	8.17	8.22	8.32	-	-	-	-	-	-	-	-	-	6.5-8.5
TSS	12	6	<5	-	-	-	-	-	-	-	-	-	30 (mg/L)
EC	1780	1380	2600	-	-	-	-	-	-	-	-	-	(µS/cm)
Turbidity	12.7	10.4	0.4	-	-	-	-	-	-	-	-	-	NTU
Alkalinity	753	556	1290	-	-	-	-	-	-	-	-	-	(mg/L)
Aluminium	0.11	0.03	0.06	-	-	-	-	-	-	-	-	-	(mg/L)
Antimony	0.019	0.011	0.041	-	-	-	-	-	-	-	-	-	(mg/L)
Arsenic	0.003	0.004	0.006	-	-	-	-	-	-	-	-	-	(mg/L)
Bicarbonate	737	536	1190	-	-	-	-	-	-	-	-	-	(mg/L)
Chromium	<0.001	<0.001	0.001	-	-	-	-	-	-	-	-	-	(mg/L)
Molybdenum	0.012	0.017	0.032	-	-	-	-	-	-	-	-	-	(mg/L)
Nickel	0.009	0.008	0.018	-	-	-	-	-	-	-	-	-	(mg/L)
Nitrogen	0.5	0.2	0.2	-	-	-	-	-	-	-	-	-	(mg/L)
Nit. Oxides	0.32	0.4	0.6	-	-	-	-	-	-	-	-	-	(mg/L)
Phosphorus	0.11	0.15	0.1	-	-	-	-	-	-	-	-	-	(mg/L)
Reactive Ph	0.07	0.08	0.09	-	-	-	-	-	-	-	-	-	(mg/L)
Vanadium	<0.01	<0.01	<0.01	-	-	-	-	-	-	-	-	-	(mg/L)
Exceedance	N	N	N	-	-	-	-	-	-	-	-	-	(Y/N)

**Note: The monitoring at Point 9 required by condition M2 is conducted by the licensee to determine compliance with the limits specified for Point 7 in condition L3.3.*

Point 10 – The Flowmeter on the Clean Water Discharge Tank at the Water Treatment Plant

Month	Volume (ML)
Jan-26	1.22
Feb-26	3.69
Mar-26	0.95
Apr-26	
May-26	
Jun-26	
Jul-26	
Aug-26	
Sep-26	
Oct-26	
Nov-26	
Dec-26	